

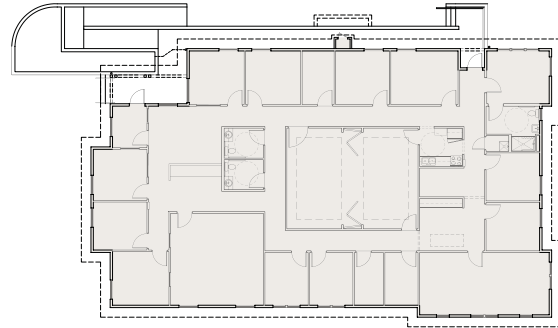
# Wheeler County Integrated Services Building

Fossil, Oregon

Located across from the historic Wheeler County Courthouse in Fossil Oregon, this new wood-framed building was designed to house several non-profit social service agencies. Included under one roof are the Wheeler County Commission on Children and Families, Juvenile Corrections, Mid Columbia Council of Governments, Morrow-Wheeler Behavior Health, and the Department of Human Services.



*Public, Interagency*

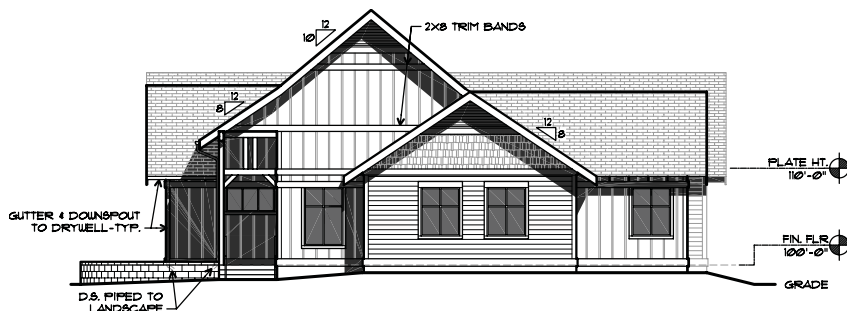


Floor Plan 1"=40'



The building design was inspired by local building including old barns and contains familiar exterior elements like board and batten siding combined with painted wood shingles.

- Approximately 4,900 square feet.
- Privacy, security and confidentiality requirements for all building tenants.
- Major Funding: Oregon Community Development Block Grant Award.



West Elevation 1"= 20'



HARA SHICK  
ARCHITECTURE, PC