

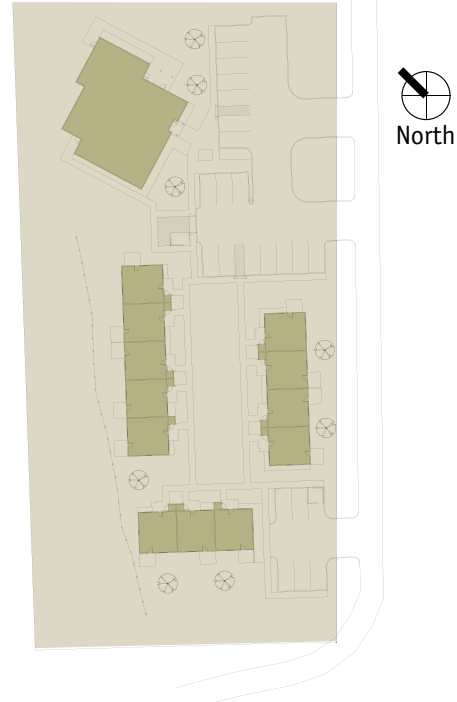
Sagewind Manor

Moro, Oregon

Senior Center, Housing

Sagewind Manor provides 12 affordable and accessible dwelling units for independent seniors, age 60 and older. The one-bedroom apartments are adjacent to a 4,100 ft² Senior Center for Sherman County.

- Sagewind Manor is the first subsidized housing project in Sherman County.
- The Senior Center provides dining space, a commercial kitchen, meeting spaces, living area, and support services for seniors and the community of Sherman County.
- Hara Shick Architecture facilitated prompt resolution of environmental wetland issues and created new land use boundary partitions as required by each funding source.
- On-site design charrettes resulted in a win-win site plan for both project components.
- Cost information provided early during the schematic design phase of work insured that the project remain on budget.



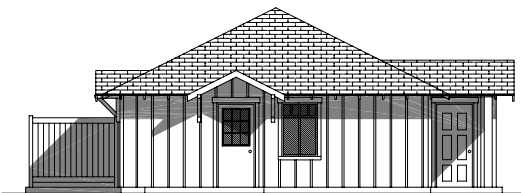
Site Plan 1" = 20'

Size:

4,100ft² (Senior Center)
7,044 ft² (Housing)

Funding:

OCDBG
Oregon Community Housing Services



Typical Unit Elevation



Senior Center



HARA SHICK
ARCHITECTURE, PC