

Jefferson County

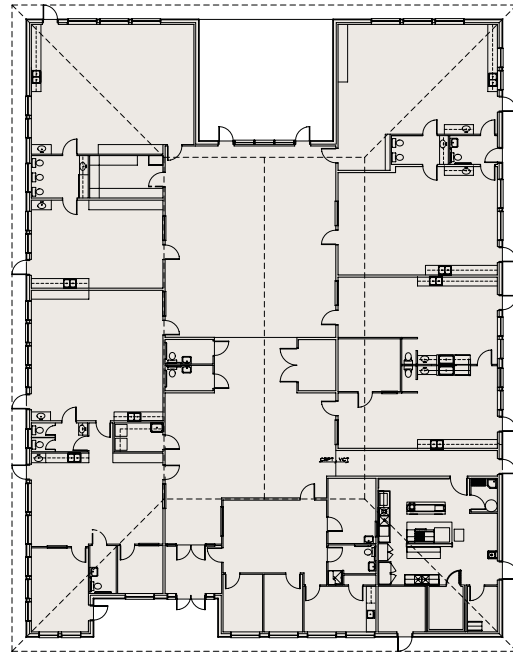
Early Childhood Center

Madras, Oregon

Child Care, Interagency

This daycare facility brings several agencies together under one roof. Shared common use areas give each agency greater access to amenities. Featured spaces include large covered indoor space, covered outdoor space, family resource area, commercial kitchen and administrative/reception support.

- Large indoor play area provides opportunities for children to interact with other groups and have space for large motor skill development
- Central gathering space for family functions, multi-group activities and before and after school programs.
- Evaluation room for parent-teacher consultations.
- ADA children's room to meet the specific needs of disabled children.
- Family resource area designed with carpet, upholstered furnishings and recessed lighting to create a comfortable setting that children can also use for quiet time.



Floor Plan

1"=40'



Status:

Completed 2000

Size:

11,800ft²

Funding:

OCDBG, Rural Development, Forest Service



HARA SHICK
ARCHITECTURE, PC